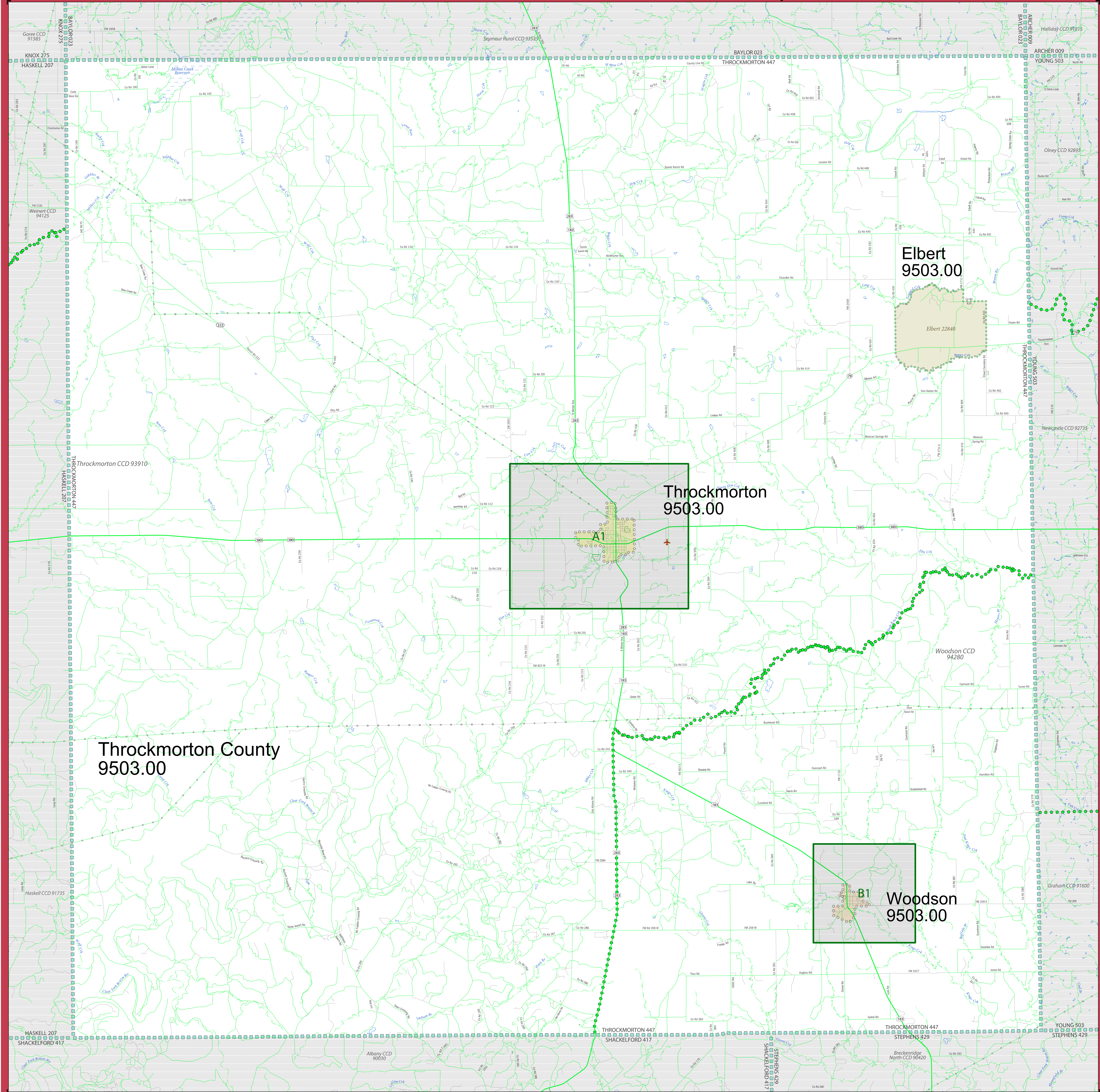


GOVERNMENTAL UNIT REFERENCE MAP (2023): Throckmorton County, TX



LEGEND

SYMBOL DESCRIPTION	SYMBOL	LABEL STYLE
Federal American Indian Reservation	Star pattern	L'ANSE RESERVATION (TA 1880)
Off-Reservation Trust Land	Star pattern	T1880
American Indian Tribal Subdivision	Star pattern	SHONTO (620)
Alaska Native Regional Corporation (ANRC)	Star pattern	NANA ANRC 52120
State (or statistically equivalent entity)	Blue outline	NEW YORK 36
County (or statistically equivalent entity)	Green outline	ERIE 029
Minor Civil Division (MCD) ¹	Green outline	Lee town 41460
Census County Division (CCD) ²	Green outline	Jemez CCD 91650
Consolidated City	Blue outline	MILFORD 47500
Incorporated Place ³	Blue outline	Davis 18100
Census Designated Place (CDP) ²	Blue outline	Cochiti 16560

DESCRIPTION	SYMBOL	DESCRIPTION	SYMBOL
Interstate	Blue line with red shield	Water Body	Blue area
U.S. Highway	Red line with shield	Glacier	Blue area with wavy lines
State Highway	Yellow line with shield	Airport, Airfield, or Helicopter Landing Pad	Red star
Other Road	Grey line	College or University	Red star
Cul-de-sac	Grey line with T-junction	Military	Red star
Circle	Grey line with circle	Prison or Juvenile Detention Center	Red star
Geographic Offset or Corridor	Red line	Cemetery	Red star
4WD Trail, Stairway, Alley, Walkway, or Ferry	Red line	Golf Course	Red star
Railroad	Black line with cross-ticks	National Park or Forest	Red star
Pipeline or Power Line	Black line with cross-ticks	Other Park	Red star
Ridge or Fence	Black line with cross-ticks	Outside Subject Area	Red star
Property Line or Nonvisible Boundary	Black line with cross-ticks	Inset Area	Red star
Perennial Stream	Blue line		
Intermittent Stream	Blue line with dashes		
Mountain Peak or Hill	Black triangle		

Where state, county, and/or MCD/CCD boundaries coincide, the map shows the boundary symbol for only the highest-ranking of these boundaries. Entity names are followed by either their FIPS code or census code; parentheses indicate a census code.

¹ "MCD" indicates a false MCD. These are for Census Bureau use only.
² The CCD and CDP boundaries represent statistical entities only and are not updated through the BAS.
³ Incorporated place name color corresponds to the incorporated place fill color.

Due to space limitations, some road names, along with other feature and geography names on the map, may not be shown.
 The Census Bureau stores primary and alternate road names, but only primary road names are used to label the roads on these maps.

All legal boundaries and names are as reported through the 2023 Boundary and Annexation Survey (BAS). The boundaries shown on this map are for Census Bureau statistical data collection and tabulation purposes only; their depiction and designation for statistical purposes does not constitute a determination of jurisdictional authority or rights of ownership or entitlement.

Data Source: U.S. Census Bureau's MAF/TIGER database (BAS24), November 2023
 Created by Geography Division: December 01, 2023

U.S. DEPARTMENT OF COMMERCE U.S. Census Bureau

Projection: Albers Equal Area Conic
 Datum: NAD83
 Spheroid: GRS 80
 1st Standard Parallel: 27 36 51
 2nd Standard Parallel: 34 43 24
 Central Meridian: -100 04 35
 Latitude of Projection's Origin: 25 50 13
 False Easting: 0
 False Northing: 0

Scale 1:74,500

0 2 4 6 8 10 kilometers
 0 2 4 6 8 10 miles

Scale 1:74,500

Boundary and Annexation Survey (BAS) ID: 2484470000

PDF versions of the BAS maps are available at:
www.census.gov/programs-surveys/bas/geographies.html

For more information, or to request additional maps, please email geo.bas@census.gov, call 1-800-972-5651, or visit www.census.gov/programs-surveys/bas.html.

Sheet 1 of 1 PARENT sheets
 Total Sheets: 3 (Index 0; Parent 1; Inset 2)

NAME: Throckmorton County (447)
 ENTITY TYPE: County or statistically equivalent entity
 ST: Texas (48)

INDEX OR PARENT SHEET #: 001
 INSET SHEET #: 000000

2023 COUNTY REF MAP (PARENT)

56252484470000001000000

United States Census Bureau